

The contribution of theatre/theatres
to the economic, social and cultural fabric
of the region

Friday 19 January 2018

**DARLINGTON
HIPPODROME**

A PLACE TO DREAM BIG

Lynda Winstanley, Director Darlington Hippodrome



**DARLINGTON
HIPPODROME**

A PLACE TO DREAM BIG

2010 under threat – the beautiful survivor of a bygone age



**DARLINGTON
HIPPODROME**

A PLACE TO DREAM BIG

Our case for support

Grade II listed landmark building

Most complete example of work of architects
Owen & Ward

Last survivor of Rino Pepi's theatrical empire in
the North-East

In 1900s 1000 theatres, by 1980s 85% destroyed
or irrevocably altered

Close connection with Bank Top Station and
Darlington's rail heritage

Well-respected in the theatre sector

At the heart of Darlington's cultural offer & sense
of community



**DARLINGTON
HIPPODROME**

A PLACE TO DREAM BIG

A rich heritage and a cast of colourful characters



**DARLINGTON
HIPPODROME**

A PLACE TO DREAM BIG

Building on support to raise funds

Director of fundraising & development
Heather Walkington



**DARLINGTON
HIPPODROME**

A PLACE TO DREAM BIG

Galvanising support

Stephen Tompkinson



Brendan Cole



**DARLINGTON
HIPPODROME**

A PLACE TO DREAM BIG

our vision for the restored theatre



**DARLINGTON
HIPPODROME**

A PLACE TO DREAM BIG

Darlington Hippodrome intends to become a home for people and communities to enjoy live performances and engage in learning and participatory experiences. We will celebrate the theatre's rich history in a beautifully restored theatre in the revitalised heart of Darlington which plays its part in contributing to the regeneration of Tees Valley.



People engaged with the theatre, including theatre-goers, those participating in heritage learning and participatory activities and volunteering alike will enjoy welcoming, engaging and informative experiences.

DARLINGTON
HIPPODROME

A PLACE TO DREAM BIG



Communities will benefit from the theatre's development, through more opportunities to experience a wider theatre offer in more comfortable conditions, and through opportunities to learn and participate in activities engaging with the heritage of the Theatre.

These communities include local schools, audiences and volunteers and also audiences in the wider Tees Valley who will have access to an attractive, comfortable and accessible theatre with a programme of musicals, drama, dance and music not currently available in the area. This will increase the vitality of the area and contribute towards making the area more attractive as a place to live, work and visit.

**DARLINGTON
HIPPODROME**

A PLACE TO DREAM BIG

Darlington Hippodrome reopens 17 November 2017

A total of £5.65m raised

Ribbon cutting by Sir Peter Luff,
Cllr Nick Wallis and Charles Tompkins



**DARLINGTON
HIPPODROME**

A PLACE TO DREAM BIG

..."the primary reason we make both public and private investments in the arts is for the inherent value of culture: life enhancing, entertaining, defining of our personal and national identities...

...it starts with the inherent value of culture, continues through all the social and educational benefits and only ends with the economic.

Otherwise we fall into Oscar Wilde's celebrated definition of a cynic: knowing the price of everything and the value of nothing."

Sir Peter Bazalgette 2014

DARLINGTON
HIPPODROME

A PLACE TO DREAM BIG

The value of theatre to the cultural fabric of our region

The typical programming mix of a large scale unsubsidised receiving house

inspiring, provocative, spectacular



Awful Auntie



Dr Jekyll & Mr Hyde

Russian Ballet of
Siberia



Madama Butterfly



DARLINGTON
HIPPODROME

A PLACE TO DREAM BIG

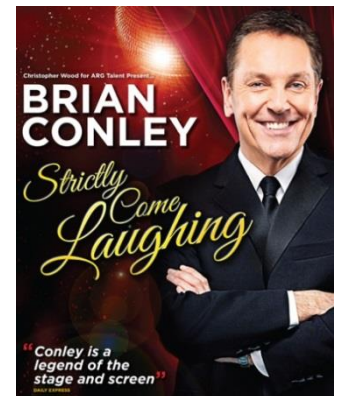
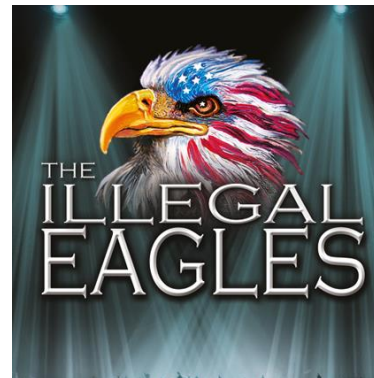
*entertaining, frothy
and fun*



Ken Dodd



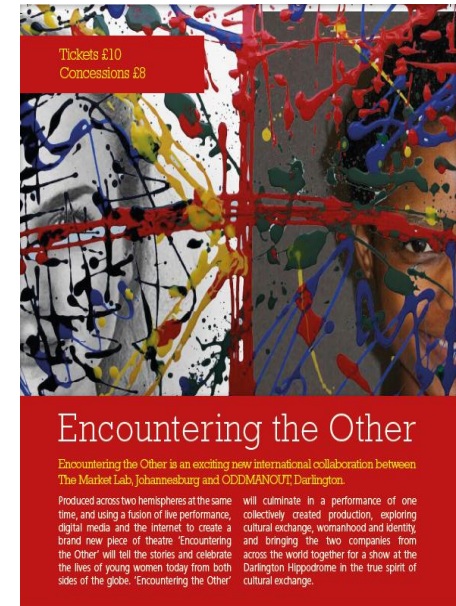
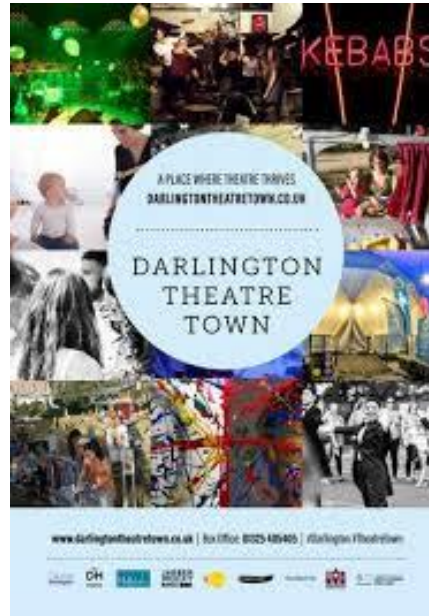
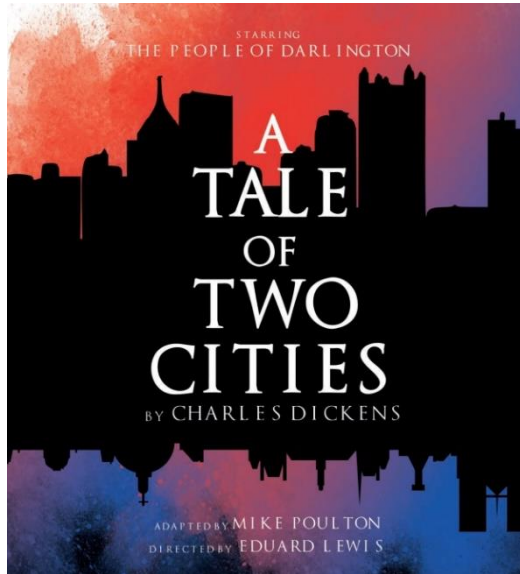
Jane McDonald



DARLINGTON
HIPPODROME

A PLACE TO DREAM BIG

But this means we can also do this...



Paines Plough's Roundabout

performed in South Africa
Friday 13th and Saturday 14th October 7:30
at The Ramkiso Mokheho Theatre, The Market Laboratory
performed in Darlington
Monday 27th November Darlington Hippodrome 7:30
www.darlingtontheatretown.co.uk | Box Office: 01525 405405



DARLINGTON
HIPPODROME

A PLACE TO DREAM BIG

and this ...



**DARLINGTON
HIPPODROME**

A PLACE TO DREAM BIG

The contribution of theatre to well being and the social fabric of our region

- The audience experience
- The transformative power of theatre
- Community cohesion and social inclusion
- Engagement & participation
- Connection between cultural engagement & educational attainment
- Work experience/employability/careers



DARLINGTON
HIPPODROME

A PLACE TO DREAM BIG

creative learning



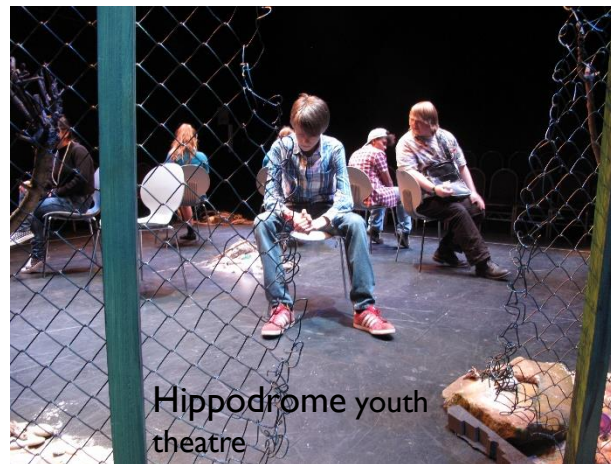
Hippodrome
Youth Dance



Arts Award



Graff at the Hipp



Hippodrome youth
theatre

**DARLINGTON
HIPPODROME**

A PLACE TO DREAM BIG



A new cultural volunteering partnership between Darlington for Culture and Darlington Hippodrome was launched in February 2017

Volunteer Fair 2017



Hippodrome welcome hosts



**DARLINGTON
HIPPODROME**

A PLACE TO DREAM BIG

Volunteer roles at Darlington Hippodrome

- Welcome hosts
- Ambassadors
- Tour guides
- Audience feedback volunteers
- Learning & engagement support volunteers
- Archive volunteers
- Volunteer peer supporters and mentors



**DARLINGTON
HIPPODROME**

A PLACE TO DREAM BIG

The contribution of theatre to the economy of the region



Industrial heritage



Rugged coastline



Rail heritage



A river runs through it

**DARLINGTON
HIPPODROME**

A PLACE TO DREAM BIG

The role of theatre in regeneration



**DARLINGTON
HIPPODROME**

A PLACE TO DREAM BIG

Darlington, the gateway to the Tees Valley



**DARLINGTON
HIPPODROME**

A PLACE TO DREAM BIG

Hull UK City of Culture 2017



Hull New Theatre



Hull Truck

Interim impact findings

- 9 in 10 residents experienced cultural activity
- Over 1.4m visits to cultural events
- 70% of residents agree or strongly agree that UK City of Culture is having a positive impact on lives of local people

DARLINGTON
HIPPODROME

A PLACE TO DREAM BIG

The stage is set...



**DARLINGTON
HIPPODROME**

A PLACE TO DREAM BIG



DH
DARLINGTON
HIPPODROME



Funding raised by
The National Lottery
and awarded by the Heritage Lottery Fund



**NORTHUMBRIAN
WATER** *living water*

BANKS CommunityFund
development with care

DARLINGTON HERITAGE TRUST

TRUSTEES JULY 2012/NEWLETTED

